

Wedgeport Farm Wind Project

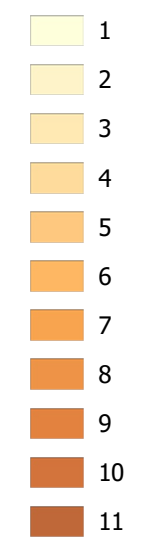
Zone of Visual Influence

Legend:

Turbines

- Proposed Turbines

Number of Visible Turbines

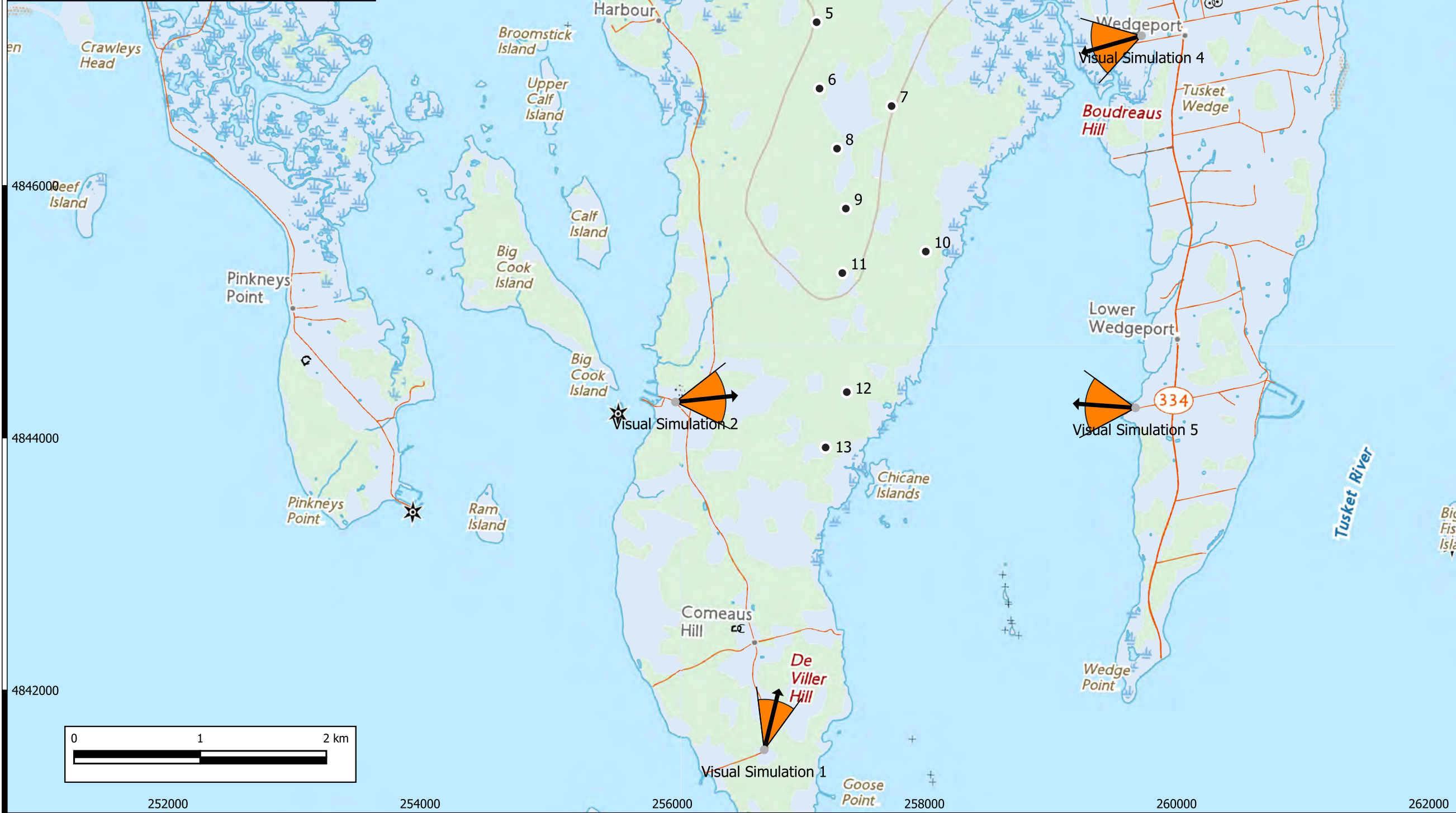
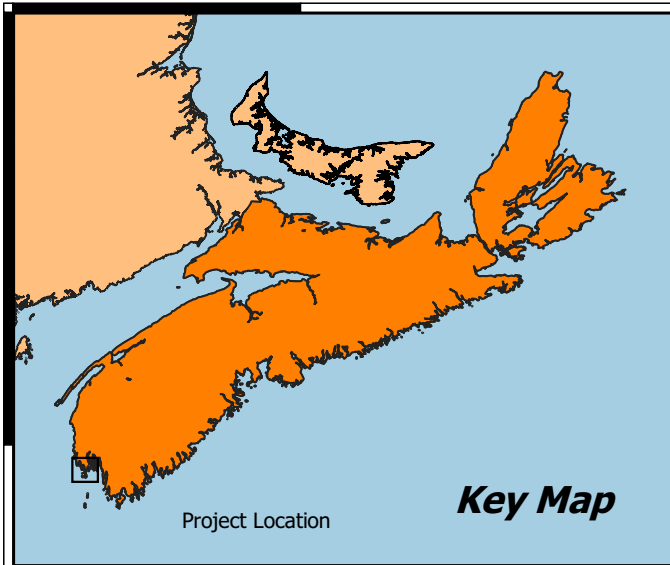


Map Data: Digital Topographic Mapping by the Nova Scotia Geomatics Center

Turbine Model: Siemens Gamesa SG 6.6-170
 Hub Height: 110.5 m
 Rotor Diameter: 170 m
 Rated Power: 6,600 kW

Modeled Using:
 Lidar Derived Digital Surface Model
 Hub Height
 Observation Height:
 1.6 m Above Ground

Nortek Resource Solutions Inc.



Wedgeport Farm Wind Project

Visual Simulation Locations

Legend:

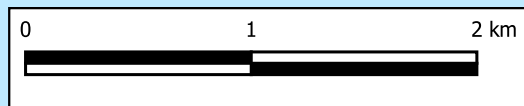
- Existing Turbine
- Proposed Turbine
- Existing Turbine
- Field of View
- Image Orientation
- Image Direction
- FOV Extent

Map Data: Digital Topographic Mapping by the Nova Scotai Geomatics Center

Turbine Model: Siemens Gamesa SG 6.6-170
 Hub Height: 110.5 m
 Rotor Diameter: 170 m
 Rated Power: 6,600 kW

Modeled Using:
 DIN ISO 9613-2

Nortek Resource Solutions Inc.






Original Photograph

Wedgeport Wind Farm Project

Visual Simulation 1 Comeau's Hill

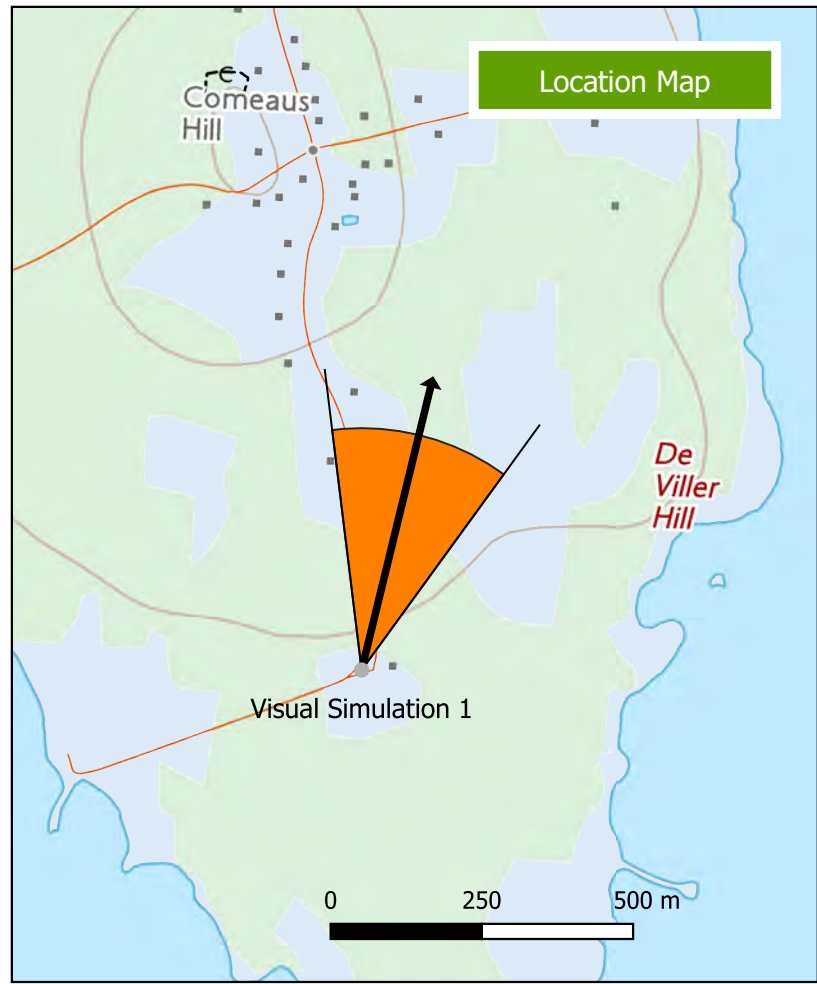
Image: Easting: 256,728
 Northing: 4,841,526
 Photograph Date: November 4, 2022
 View Angle: 14 Degrees

Turbine Manufacturer: Siemens Gamesa
 Model: 6.6-170
 Hub Height: 110.5 m
 Rotor Diameter: 170 m
 Rated Power: 6,600 kW

Coordinate System	UTM, NAD83, Zone 20	January 16, 2023
Analysis By: Nortek Resource Solutions Inc.		



Visual Simulation



Location Map



Original Photograph

Wedgeport Wind Project

Visual Simulation 2 Little Harbour

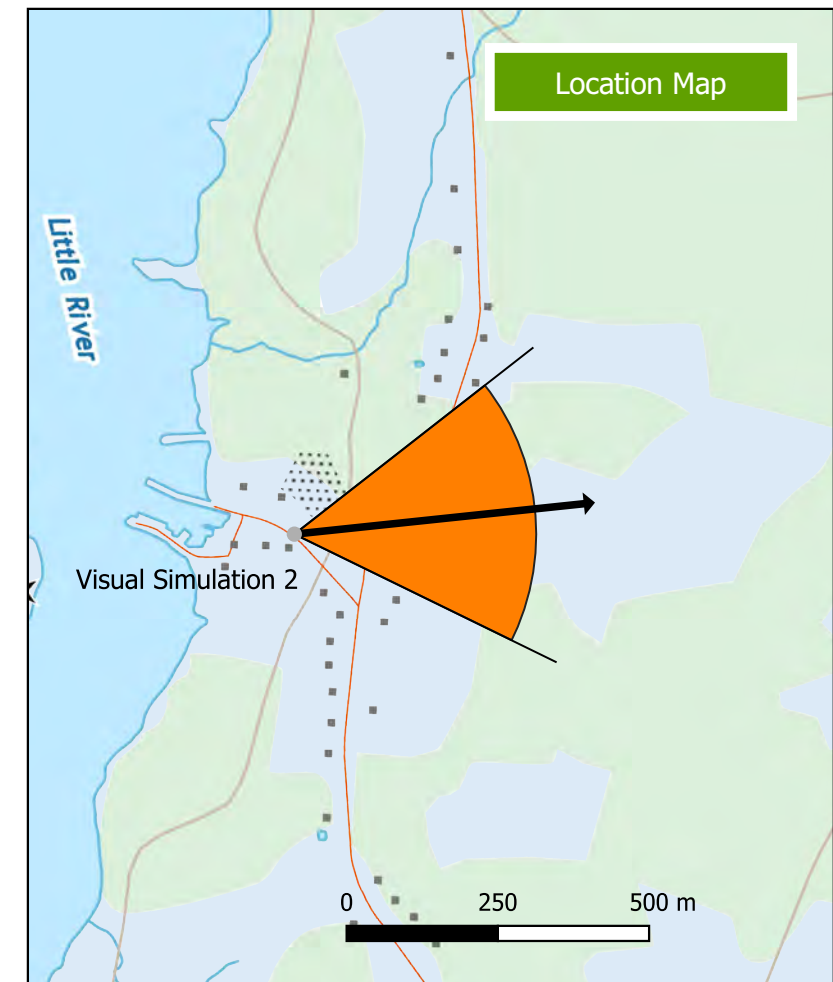
Image: Easting: 256,024
 Northing: 4,844,284
 Photograph Date: November 8, 2022
 View Angle: 84 Degrees

Turbine Manufacturer: Siemens Gamesa
 Model: 6.6-170
 Hub Height: 110.5 m
 Rotor Diameter: 170 m
 Rated Power: 6,600 kW

Coordinate System	UTM, NAD83, Zone 20	January 16, 2023
Analysis By: Nortek Resource Solutions Inc.		



Visual Simulation



Location Map



Original Photograph

Wedgeport Wind Project

Visual Simulation 3 Upper Wedgeport

Image: Easting: 258,914
 Northing: 4,849,000
 Photograph Date: November 4, 2022
 View Angle: 224 Degrees

Turbine Manufacturer: Siemens Gamesa
 Model: 6.6-170
 Hub Height: 110.5 m
 Rotor Diameter: 170 m
 Rated Power: 6,600 kW

Coordinate System

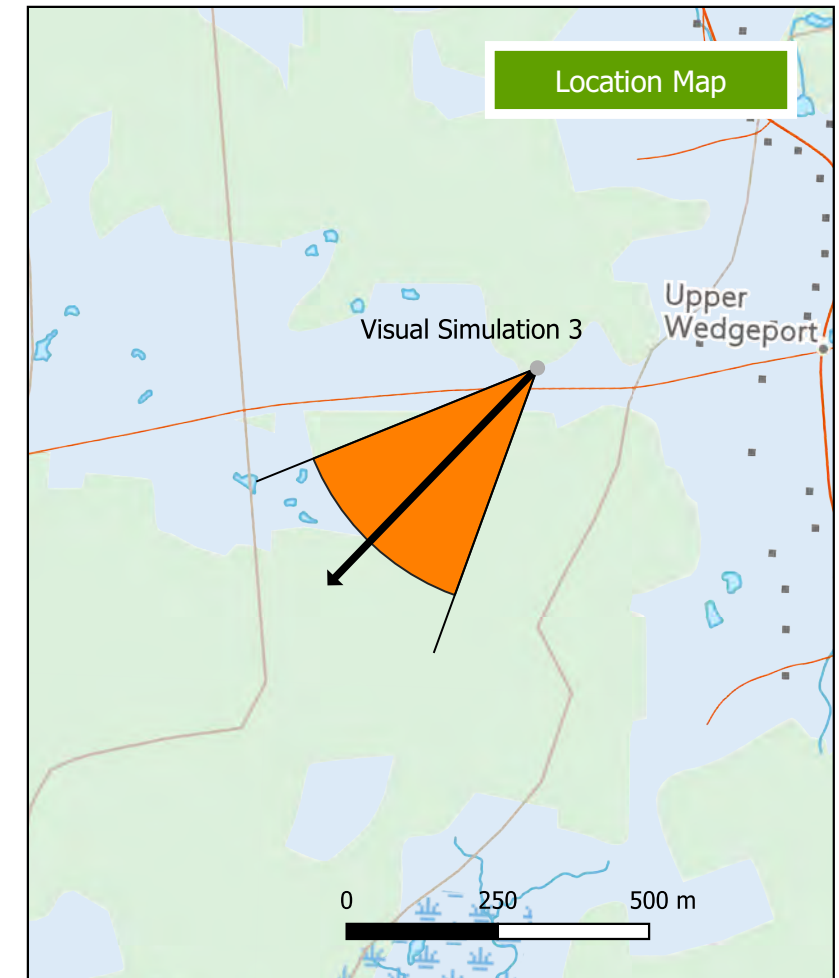
UTM, NAD83, Zone 20

January 16, 2023

Analysis By: Nortek Resource Solutions Inc.



Visual Simulation



Location Map



Original Photograph

Wedgeport Wind Project

Visual Simulation 4 Wedgeport

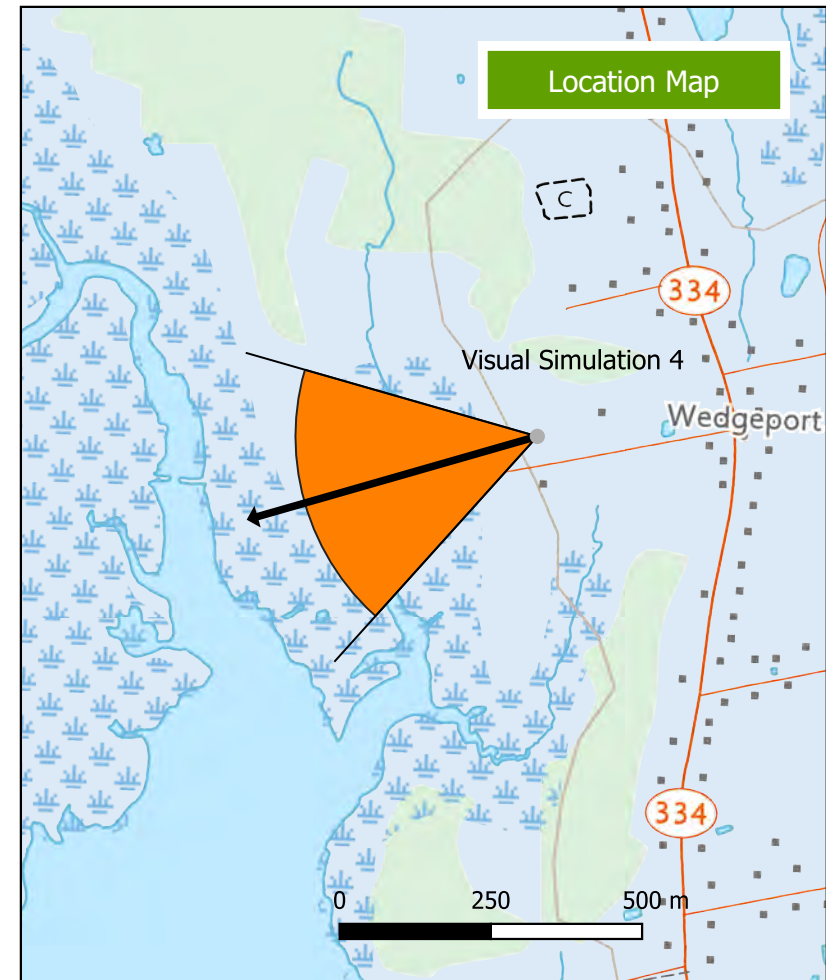
Image: Easting: 259,721
 Northing: 4,847,188
 Photograph Date: November 5, 2022
 View Angle: 254 Degrees

Turbine Manufacturer: Siemens Gamesa
 Model: 6.6-170
 Hub Height: 110.5 m
 Rotor Diameter: 170 m
 Rated Power: 6,600 kW

Coordinate System	UTM, NAD83, Zone 20	January 16, 2023
Analysis By: Nortek Resource Solutions Inc.		



Visual Simulation





Original Photograph

Wedgeport Wind Project

Visual Simulation 5 Lower Wedgeport

Image: Easting: 259,674
 Northing: 4,844,238
 Photograph Date: November 5, 2022
 View Angle: 274 Degrees

Turbine Manufacturer: Siemens Gamesa
 Model: 6.6-170
 Hub Height: 110.5 m
 Rotor Diameter: 170 m
 Rated Power: 6,600 kW

Coordinate System	UTM, NAD83, Zone 20	January 16, 2023
Analysis By: Nortek Resource Solutions Inc.		



Visual Simulation

